

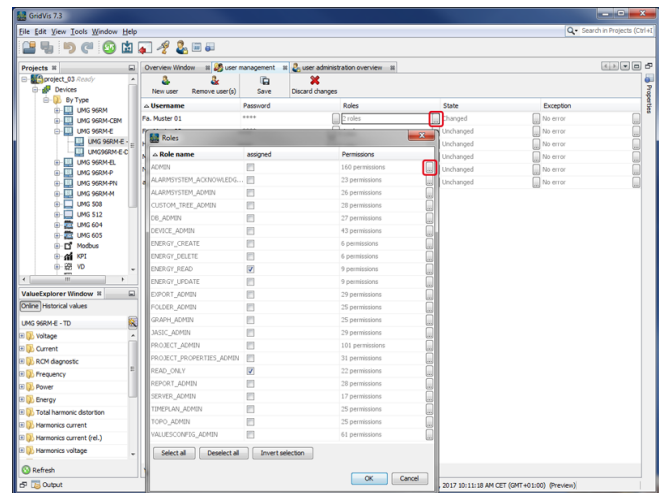
Rollen und Berechtigungen

- In the **GridVis software user management** you can assign **"Roles"** with corresponding **"Rights"** to users.
- **"Users"** and **"Roles"** (group of rights) can be created, assigned and managed in the **"User Editor"**.

ATTENTION!

- The **"User Management"** function in the GridVis software is subject to constant revision. As a result, the **"Roles"** and the **"rights"** of the users change, too. You can find the most up-to-date list of roles and rights in the user interface of your GridVis software.
- The GridVis **"Ultimate"** edition with the web visualization software GridVis Energy allows you to configure and organize user directories and their roles (rights) directly through the web interface.
- Import and export functions in the **"User Management"** of your GridVis desktop software enable the exchange of user directories between the GridVis Energy web interface and your GridVis desktop edition.
- In the table below you will also find roles (rights) that were tailored to GridVis Energy (for the GridVis **"Ultimate"** edition and higher) and added to the **"User Management"** (GridVis desktop).

Fig.: "Roles" window in the user editor



To view a complete list of the roles ("Roles" window in the GridVis software) with your rights, proceed as a user with limited rights as follows:

1. After you have created the GridVis administrator as a user, log in with your **"User Name"** and **"Password"** to your GridVis project ("User Management Overview" window --> "Log In" under the user actions).
2. After you have successfully logged in, in the window **"User Editor"** under the entry **"Roles,"** click on the button **"..."**
3. The window **"Roles"** will appear.
4. To view the rights of the individual roles, click on the button **"..."** in the corresponding **"Role Line"** (see fig. on the right).
5. The window **"Rights"** will open.

The following table shows excerpts of the roles with their most important rights:

Roles	Excerpts of the most important rights from the roles	GridVis edition
1 ADMIN	<p>Administrator of the GridVis software. The user with the role "Administrator" has expanded rights, including those for:</p> <ul style="list-style-type: none"> • creating / editing / deleting users, • creating / managing / optimizing databases, • creating / editing / deleting projects, • adding / editing / deleting devices, • adding / editing / deleting topologies, • adding / editing / deleting graphs, • creating / editing / managing Jasic files, • adding / editing / deleting reports, • deleting values, • creating / deleting / managing schedules. 	<ul style="list-style-type: none"> • GridVis "Professional" and higher

2	ALARMSYSTEM_ACKNOWLEDGER	Users with the role " Administrator for confirming the alarm system. " Have, in addition to the basic rights " READ_ONLY ,"these rights, among others: <ul style="list-style-type: none"> • Updating an element in the alarm system. • Reading an element in the alarm system. 	<ul style="list-style-type: none"> • GridVis "Service" and higher
3	ALARMSYSTEM_ADMIN	Users with the role " Administrator for the alarm system. " Have, in addition to the basic rights " READ_ONLY ,"these rights, among others: <ul style="list-style-type: none"> • Updating an element in the alarm system. • Reading an element in the alarm system. • Creating and deleting elements in the alarm system. 	<ul style="list-style-type: none"> • GridVis "Service" and higher
4	CUSTOM_TREE_ADMIN	Users with the role " Administrator for a user-defined tree structure. " Have, in addition to the basic rights " READ_ONLY ,"these rights: <ul style="list-style-type: none"> • Creating, deleting and editing user-defined trees. • Creating, deleting and sorting directories in user-defined trees. 	<ul style="list-style-type: none"> • GridVis "Professional" and higher
5	DB_ADMIN	Users with the role " Administrator for the area of databases. " Have, in addition to the basic rights " READ_ONLY ," the right to configure and manage databases.	<ul style="list-style-type: none"> • GridVis "Professional" and higher
6	DEVICE_ADMIN	Users with the role " Administrator for the area of devices. " Have, in addition to the basic rights " READ_ONLY ,"these rights: <ul style="list-style-type: none"> • Creating, deleting and configuring devices, • Deleting values in device storage, • Changing / deleting schedules for device synchronization, • Updating device firmware, • Installing apps on the device. 	<ul style="list-style-type: none"> • GridVis "Professional" and higher
7	ENERGY_CREATE	Users with the role " ENERGY_CREATE " have these rights: <ul style="list-style-type: none"> • Creating images, dashboards and templates. 	<ul style="list-style-type: none"> • Creating for the web visualization software "GridVis Energy" • "GridVis Energy" is a part of GridVis "Ultimate"
8	ENERGY_DELETE	Users with the role " ENERGY_DELETE " have these rights: <ul style="list-style-type: none"> • Deleting images, dashboards and templates. 	<ul style="list-style-type: none"> • Creating for the web visualization software "GridVis Energy" • "GridVis Energy" is a part of GridVis "Ultimate"
9	ENERGY_READ	Users with the role " ENERGY_READ " have these rights: <ul style="list-style-type: none"> • Viewing images, dashboards, dashboard favorites and templates. • Viewing devices and device templates. 	<ul style="list-style-type: none"> • Creating for the web visualization software "GridVis Energy" • "GridVis Energy" is a part of GridVis "Ultimate"
10	ENERGY_UPDATE	Users with the role " ENERGY_UPDATE " have these rights: <ul style="list-style-type: none"> • Editing images, dashboards, dashboard favorites and templates. • Editing devices. • Changing template assignments. 	<ul style="list-style-type: none"> • Creating for the web visualization software "GridVis Energy" • "GridVis Energy" is a part of GridVis "Ultimate"
11	EXPORT_ADMIN	Users with the role " Administrator for the area of export. " Have, in addition to the basic rights " READ_ONLY ,"these rights, among others: <ul style="list-style-type: none"> • Updating, saving, deleting and reading data exports. • Creating, editing, reading, deleting and saving export schedules. 	
12	FOLDER_ADMIN	Users with the role " Administrator for the area of directories. " Have, in addition to the basic rights " READ_ONLY ,"these rights, among others: <ul style="list-style-type: none"> • Creating, updating, processing, deleting and reading folder directories. 	
13	GRAPH_ADMIN	Users with the role " Administrator for the area of graphs. " Have, in addition to the basic rights " READ_ONLY ,"these rights: <ul style="list-style-type: none"> • Creating, deleting and managing graphs. 	<ul style="list-style-type: none"> • GridVis "Professional" and higher

14	JASIC_ADMIN	<p>Users with the role "Administrator for the area of Jasic." Have, in addition to the basic rights "READ_ONLY,"these rights:</p> <ul style="list-style-type: none"> • Creating, deleting and managing Jasic files. 	<ul style="list-style-type: none"> • GridVis "Professional" and higher
15	PROJECT_ADMIN	<p>Users with the role "Administrator for the project." Have the same rights as the "Administrator,"but cannot create and manage other users.</p>	<ul style="list-style-type: none"> • GridVis "Professional" and higher
16	PROJECT_PROPERTIES_ADMIN	<p>Users with the role "Administrator for project properties." Have, in addition to the basic rights "READ_ONLY," the right to activate and manage project properties.</p>	<ul style="list-style-type: none"> • GridVis "Professional" and higher
17	READ_ONLY	<p>Users with "Basic Rights to Read"</p>	<ul style="list-style-type: none"> • GridVis "Professional" and higher
18	REPORT_ADMIN	<p>Users with the role "Administrator for the area of reports." Have, in addition to the basic rights "READ_ONLY,"these rights:</p> <ul style="list-style-type: none"> • Creating, deleting and managing reports. 	<ul style="list-style-type: none"> • GridVis "Professional" and higher
19	SERVER_ADMIN	<p>Users with the role "Administrator for the area of servers." Have, in addition to the basic rights "READ_ONLY,"these rights, among others:</p> <ul style="list-style-type: none"> • Viewing images, dashboards, dashboard favorites and templates. • Viewing devices and device templates. • Reading, editing, adding and deleting system settings for the service. • Viewing, switching, creating and deleting users. 	<ul style="list-style-type: none"> • Creating for the web visualization software "GridVis Energy" • "GridVis Energy" is a part of GridVis "Ultimate"
20	TIMEPLAN_ADMIN	<p>Users with the role "Administrator for schedules." Have, in addition to the basic rights "READ_ONLY,"these rights:</p> <ul style="list-style-type: none"> • Creating, deleting and editing schedules. 	<ul style="list-style-type: none"> • GridVis "Professional" and higher
21	TOPO_ADMIN	<p>Users with the role "Administrator for the area of topology." Have, in addition to the basic rights "READ_ONLY,"these rights:</p> <ul style="list-style-type: none"> • Creating, deleting and editing topology pages. 	<ul style="list-style-type: none"> • GridVis "Professional" and higher
22	VALUESCONFIG_ADMIN	<p>Users with the role "Administrator for the area of value configuration." Have, in addition to the basic rights "READ_ONLY,"these rights, among others:</p> <ul style="list-style-type: none"> • Configuring, importing, managing, migrating and optimizing databases. • Reading and updating database actions. • Reading and changing value configurations. • Opening, changing and executing reports. • e.g. 	