

# GridVis-Editionen - beispielhafte Topologien

---

As described in the "Software Editions," the GridVis editions have various functions. GridVis "Service" and "Ultimate" have a system service that reads data from the measuring devices in the background when the GridVis software (GridVis desktop) is closed.

In the following you will find example project structures (topologies) and their properties. You can find information for visualization under GridVis-Service (GridVis-Dienst).

---

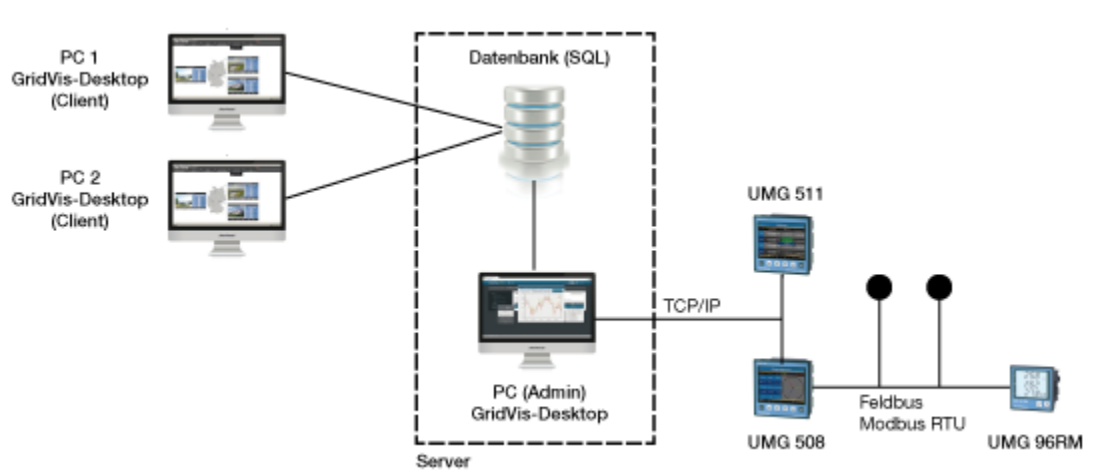
## 1. Example: GridVis desktop topology ("Basic" edition)

- GridVis® (1x) is installed locally on a PC.
- To read out the measurement data, your GridVis installation has to run on the PC.
- Devices can be controlled, read and configured via GridVis®.
- GridVis® "Basic" writes the created data into the connected database (only Jan DB).

Further information on GridVis "Basic" under "[Range of Functions](#)" and "[Software-Editions](#)."

---

## 2. Example: GridVis desktop topology ("Professional" edition)

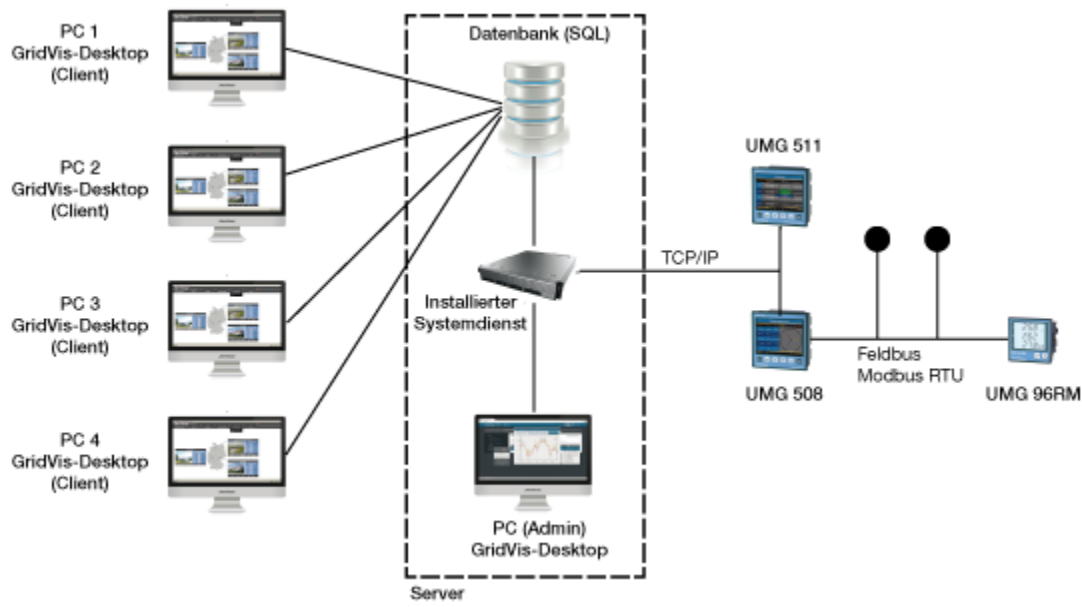


- GridVis® is installed e.g. on a server with an Admin PC or centrally on a virtual machine.
- GridVis "Professional" allows for 3 installations (e.g. one server installation for the Admin and 2 Client installations).
- To read out the measurement data, your GridVis installation has to run on the PC.
- Devices can be controlled, read and configured via GridVis®.
- The created data is written into the connected database (Jan DB, MySQL, MS-SQL) with the GridVis® project.  
**Janitza recommendation: MS-SQL (but not the SQL server version "Express").**

Further information on GridVis "Professional" and "Enterprise" under "[Range of Functions](#)" and "[Software-Editions](#)."

---

## 3. Example: GridVis desktop topology ("Service", "Ultimate" edition)



- GridVis "Service" and "Ultimate" function locally on a PC and over a **GridVis-Service (GridVis-Dienst)** on a server.
- The system service reads data from the measuring devices in the background when GridVis® is closed.
- GridVis "Service" or "Ultimate" allow parallel use with a maximum of 5 clients (e.g. one server installation for the Admin and 4 Client installations).
- You can configure UMG measuring devices and projects via the GridVis® desktop programming interface. Then the device rights are transferred to the GridVis® system service.
- You can configure the GridVis® system service through the web browser (cf. "**GridVis-Service (GridVis-Dienst)**").
- In addition to the configuration through the web browser (system service), GridVis "Ultimate" has the integrated GridVis "Energy," web visualization software with additional functions, such as "User Management," "Dashboards," "Image Manager," and configurators (KPI/Sankey).
- Graphical and statistical analysis continues to run through the GridVis® desktop.

Further information on GridVis "Service" and "Ultimate" under "[Range of Functions](#)" and "[Software-Editions](#)."

**Note:**

You can find detailed descriptions of the WEB "Service" and "Ultimate" edition functions under "[GridVis-WEB](#)."